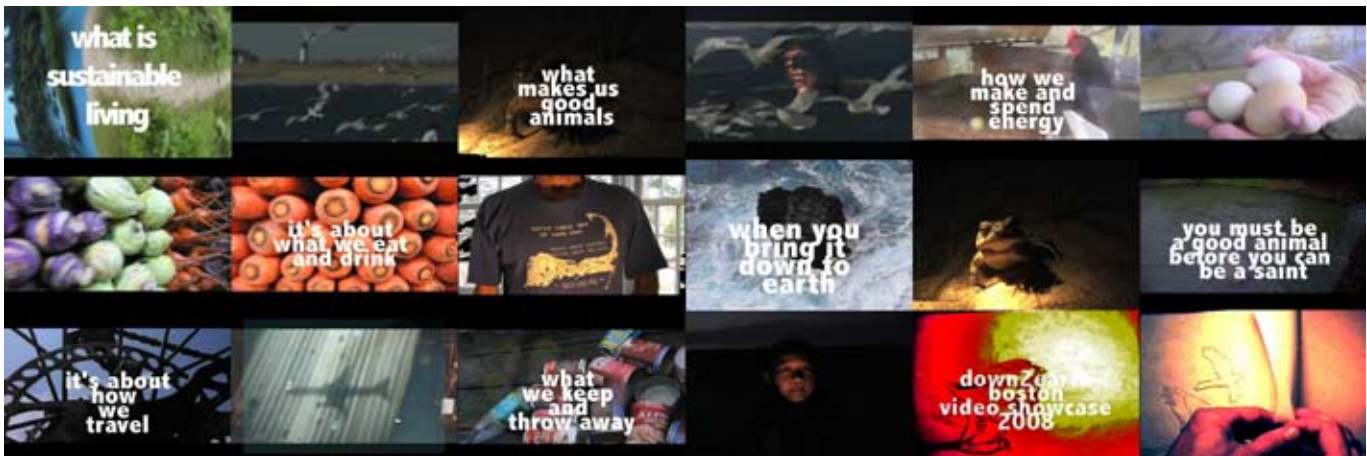




# down:2:earth VIDEO PROJECT

## Explore sustainability through your own lens

D2E invites students, artists, activists, and everyone in between to submit original three-minute digital videos focused on themes of sustainable living and natural landscapes in New England. Your videos should be visually compelling and can explore any related theme, in any style: narrative, montage, animated, documentary or experimental.



### D2E when & where

Friday, April 3

5:00 pm – 9:00 pm

Saturday, April 4

11:00 am – 6:00 pm

Sunday, April 5

11:00 am – 5:00 pm

Hynes Convention Center  
900 Boylston Street  
Boston, MA 02115

Your everyday life is full of visual material and experiences that can be documented to make a statement, to explore your ideas, or merely to provoke thought about the world and how we live in it. Carry a camera and capture these as they happen or record them in a notebook and restage them later. You needn't travel far to see examples of how global systems affect us: the atmosphere, the weather, the land and the shoreline, the pockets of nature in the city, consumer culture and our daily needs at home. Or use your knowledge and imagination to create with words, photos and drawings, images and sounds.

### Video topics could include:

Environmental consciousness in everyday life, volunteerism, nature walks, poetry as a subject, Outdoor activities with a message, profiles of people living sustainably, Artists impressions, consumerism, etc.  
*It's up to you!*

### Rules and guidelines:

- Videos must be three minutes or less.
- Submit your video on a CD or DVD in one of the common digital video file formats: .AVI (preferred for best quality), .MOV, .MPG, MPEG4 and .WMV. Remember to send us the files rather than an encoded DVD format so we can copy them for projection.
- Use resolution settings appropriate for projecting videos rather than for playback on a mobile device.
- Videos must be received by Friday March 20, 2008 at the below address:  
Commonwealth Promotion, Inc.  
715 Boylston Street - Boston MA - 02116
- Videos must not use copyrighted material without permission.
- Submitters must possess signed release forms for all persons appearing in their videos.
- D2E and its artistic advisors reserve the right to choose which videos will be presented and may reject entries for any reason, including relevance to sustainability themes, appropriateness to D2E, and effectiveness of the message.

Selected entries will be presented on the main stage at D2E. The most effective and creative entries will be recognized at D2E's Kick-off Event on Friday, April 3.